

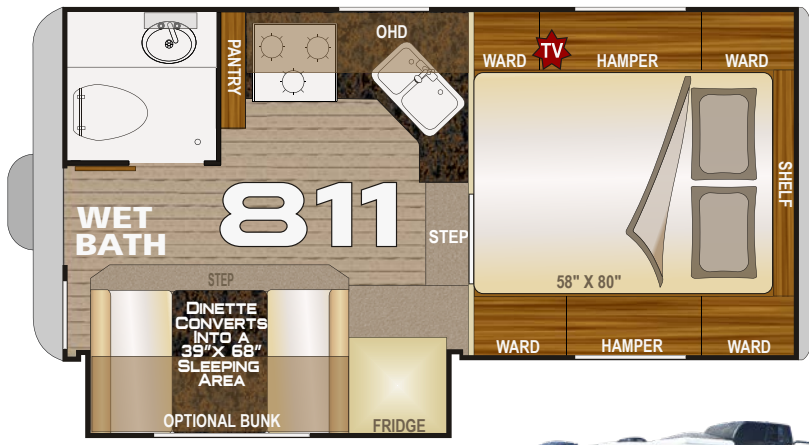
ARCTIC FOX 811

AF CAMPER

ALL CONDITIONS UNIT FOUR SEASONS

1 QUALITY FIRST

www.northwoodmfg.com



Specifications

811	Model Number
2873	Dry Weight Lbs.
1303	Dry Weight Kgs.
8'1"	Width
8'7"-10" w/AC	Exterior Height
6'7"	Interior Height
9'0"	Floor Length
16'8"	Overall Length
50	Fresh Water w/Water Heater
38	Gray Water
23	Black Water
14	LPG Capacity (approx. gallons)
20	Auto Ignition Furnace (1000 BTU's)



ARCTIC FOX 811

Standard Features

- Fully Welded, Thick-Wall Aluminum Frame Construction
- One-Piece, Corona Treated, Continuous Fiberglass
- Hot, Polyurethane Laminated, Multi-Layered Substrate Walls
- All-Conditions/Four Seasons Foam Block Insulation
- Cathedral Arched Ceiling
- Dinette Slide
- Heated Holding Tanks
- Deluxe Bumper w/Hose Carrier
- Residential Wear Floor Covering
- LED Exterior Lighting / 45 Watt Solar Panel/ Sidewall Solar Port
- LPG Quick Connect / Black Water Flush System
- Automatic Change-Over Regulator
- Exterior Shower / Entry Door Friction Hinge
- 6 Gal DSI Gas/Elect Quick Recovery Water Heater
- 20K BTU Auto Ignition Furnace w/Digital Thermostat
- Marine Style Detachable Shore Cord
- 12-Volt Disconnect Switch
- Frameless Windows
- Rear Back-Up Window / Large Exterior Folding Grab Handle
- Magnetic Luggage Door Catches
- Satellite Ready / Solar Ready
- LED Interior Utility & Decorative Lighting
- Interior Command Center
- Custom One Piece Formed Countertops & Dinette Table
- Ozite Ceiling Carpet Front To Back
- Designer Wood Grain Finish Throughout
- Roller Bearing Drawer Glides
- Fabric Night Shade Window Treatments
- AM/FM/CD/DVD Player w/Bluetooth
- Smoke, LPG & CO Leak Detectors
- Charge Wizard
- Stainless Steel Appliances
- Residential, Built-In Microwave
- High Output 3-Burner Range with Range Cover
- Daylitter Kitchen Skylight w/ Shade
- Porcelain, Foot-Pedal Toilet / Bath Skylight
- Shower Curtain with Curved Track / Full Shower
- NW TruRest Queen Mattress w/ Bedspread
- Privacy Curtin in Cab Over
- USB Charging Ports on Both Sides of Bed

FOX VALUE PACK #505: (MANDATORY)

- Rear Electric Awning w/LED Lights / Sliding Battery Rack
- Dual 30lb LP Tanks/ Roof Rack & Ladder
- Rieco Titan Electric Jacks w-6 function remote/Outside
- Speakers / "Joey" Sliding Storage Tray/Omni-Directional TV Antenna
- Extender Ready / Diamond Plate Knee Wall Armor
- Large 2 Way Fridge (7 Cu Ft) w/ Cold Weather Kit
- Deluxe Stainless-look Refrigerator Door Panels
- Large 22" Oven/Microwave Oven
- Multi-Speed Reversible Fan Vent
- Hardwood Hamper Doors
- Below Dinette Access Door & Drawer
- Front Bedroom Shelf/Bedspread

Other Available Options

- CSA (Canadian Dealers Only)
- 19" 12V LED TV
- 32" 12V LED TV (NA w/Larger Roadside Ward)
- Thermal-Pane Windows
- Arctic Fox Camper Seat-Step
- Fox Landing
- Pull Out Mid Step
- Add. Fox Landing steps
- Gen Ready (Short Box Only)
- 2.5 Onan LP Generator
- 100 Watt Solar Panel
- 170 Watt Solar Panel
- Winegard Carryout G2+ Sat Dish (DISH/DIRECT)
- Larger Roadside Ward (NA w/32" 12V LED TV)
- Overhead Bunk in Dinette
- Swing Out Brackets
- 69" Roll-over Lounge
- Full Wall Ward Curb Side
- 3-Way 7 cu ft Dbl Door Refer
- 11K BTU Air Conditioner
- 3 Burner Cooktop (Del Oven) – No Charge
- Aussie Grill w/Bracket
- Coleman Mach 8 9K BTU A/C
- Convection Oven (Del Microwave)
- 2 Lg Drawers Under Cooktop
- 24" Add-A-Step
- Side Box Awning-Road Side
- Slide Out Topper
- Side Boxes (Short Box Only)
- Rear View Camera
- Gateway Router
- FOX VALUE PACKAGE