

ARCTIC FOX

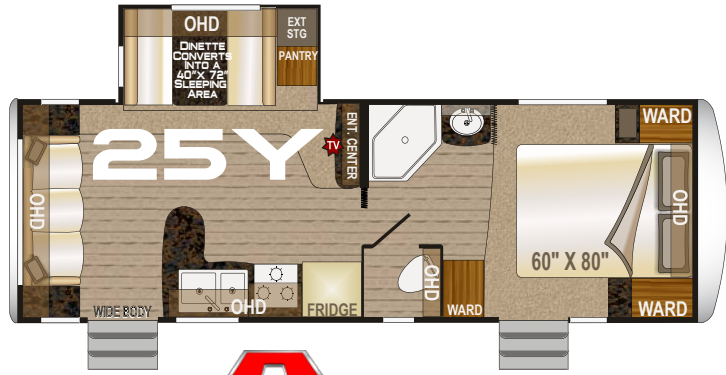






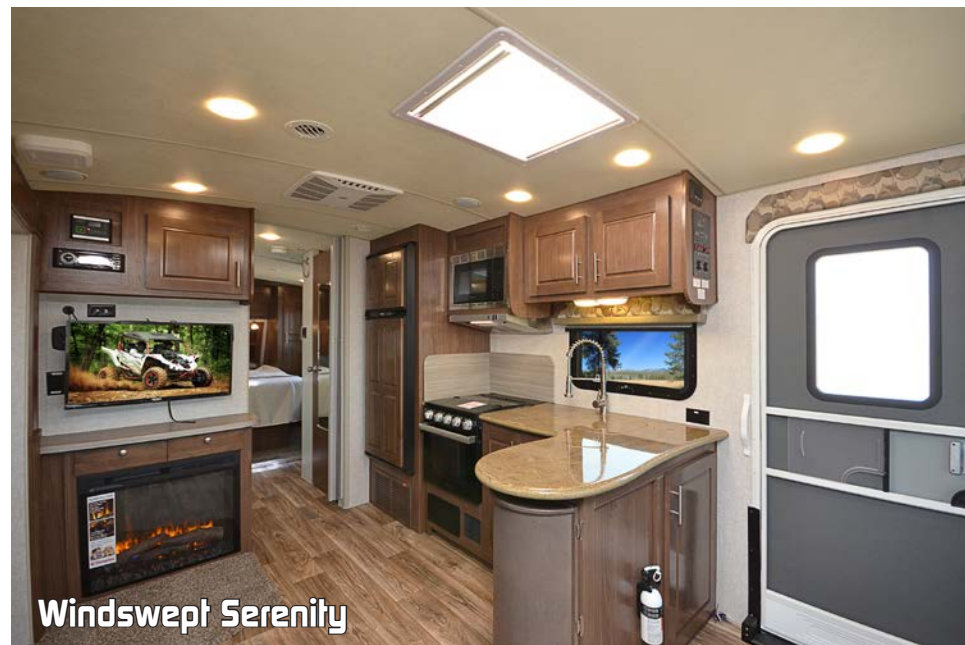
25Y

www.northwoodmfg.com



Specifications

- 25Y Model Number
- 6640 Dry Axle Weight (approx. Lbs.)
- 802 Dry Hitch Weight (approx. Lbs.)
- 3258 Net Carrying Capacity
- 7442 Gross Dry Weight-lbs (approx. Lbs.)
- 10700 Gross Vehicle Weight Rating (GVWR)-Lbs.
- 30'0" Exterior Length (approx. w/hitch)
- 11'7" Exterior Height (approx. incl. AC unit)
- 8'6" Exterior Width (approx. w/o awning)
- ST225 Tire Size
- 75R15
- E Load Range
- 57 Fresh Water w/ Water Heater (approx. gal.)
- 47 Gray Water Tank (approx. gal.)
- 35 Black Water Tank (approx. gal.)
- 14 LPG Capacity (approx. gal.)
- YES CSA - Canadian Dealers Only
- 30 Auto Ignition Furnace (1,000 BTU's)



ARCTIC FOX 25Y

Standard Features

- Northwood Built, Independently Certified, Off-Road Chassis
- Fully Welded, Thick-Wall Aluminum Frame Construction
- One-Piece, Corona Treated, Continuous Fiberglass
- Hot, Polyurethane Laminated, Multi-Layered Substrate Walls
- High Density Block Foam Insulation
- Wide-Body Floorplan
- E-Z Lube Axles w/Nev-R Adjust Forward, Self Adjusting Brakes
- 15" Aluminum Wheels / Tires & White Mod Spare
- Shocks On All Four Wheels
- Stabilizer Jacks / MORryde Step Above w/Strut Assist (2)
- Dinette Slide
- All-Conditions/Four Seasons Insulation With R-18 Ceiling
- R-15 Reflective Foil Insulation in Roof / Slide
- Heated Holding Tanks / Cathedral Arched Ceiling
- Aerodynamic One Piece Front Cap w/BackRoad Armor
- 2 Independently Switched LED Hitch Lights
- Easy Access LP Cover / Diamond Plate Bumper Wrap
- LED Interior & Exterior Lighting
- Roof Rack & Ladder
- Omni-Directional TV Antenna
- SLAM Door Latches on Pass Thru Storage Doors
- 12V Light in Storage Compartment
- LPG Quick Connect & Black Water Flush System
- Large Exterior Entry Grab Handle / Entry Door Friction Hinges
- Exterior Shower / 2 Afox Logo Director's Chairs
- Semi-Automatic Winterization/By-Pass System
- 10 Gal DSI Gas/Elect Quick Recovery Water Heater
- 13.5m BTU Air Conditioner w/Condensation-Resistant Ducting
- Carefree Travel'R 12V LED Awning w/Adjustable Pitch HW
- 45 Watt Solar Panel / Sidewall Solar Port
- 12-Volt Power Tongue Jack
- Outside Speakers/Battery Disconnect
- Frameless Thermal Pane Windows
- Satellite Ready / Solar Ready
- Interior Command Center / Afox Signature Throw Blanket
- Bedroom Carpet w/ Pad
- Roller Bearing Drawer Glides
- Slow Rise Night Shades
- 32" 12v LED TV & AM/FM/CD/DVD Player w/Bluetooth
- Smoke, LPG & CO Leak Detectors
- Charge Wizard / Digital Thermostat
- Jackknife Sofa With Decorative Throw Pillows
- Booth Dinette
- Solid Surface Kitchen Countertops
- Custom One Piece Formed Countertops & Dinette Table
- Residential, Built-In Microwave / Range Cover
- Extra Large Fridge (10 Cu Ft) w/ Cold Weather Kit
- Arctic Fox Signature Clock & Entry Mat
- Solid Surface Bathroom Countertops w/SS Sink
- Daylitter Kitchen Skylight w/ Shade
- FanTastic Vent (Kitchen)
- Porcelain, Foot-Pedal Toilet / Bath Skylight
- FanTastic Vent - Bathroom (Exhaust Only)
- Glass Shower Enclosure / Garden Tub
- NW TruRest Queen Mattress w/ Bedspread
- FanTastic Vent (Bedroom)
- Recessed Storage Headboard
- USB Charging Port at Dinette & on Both Sides of Bed

Other Available Options

- Battery Box Kit
- Slide-Out Topper
- Alumaguard Main Awning
- CSA (Canadian Dealers Only)
- 19" 12v LED TV Bedroom
- 15K Low Pro Air Conditioner w/Ducting
- 15K Air Conditioner w/ Ducting
- Powered Scissor Jacks, Front and Rear
- 2" Receiver Hitch
- Freestanding Table w/ 4 Chairs
- Holding Tank Heat Pads (All Tanks)
- 2 Cross-Stitch Swivel Rockers (Del. Jackknife)
- Fireplace
- Powered Dual-Motor Sliding Stab Jacks, Rear
- 100 Watt Solar Panel
- 170 Watt Solar Panel
- 5 Point Leveling System
- Winegard Carryout G2+ Sat Dish (DISH/DIRECT)
- 2 Cross-Stitch Swivel Rocker Recliners (Del. Jackknife)
- Aussie Grill w/Stand
- Rear View Camera
- Gateway Router